

"How to Use the Dial Telephone." See Inside Back Cover.  
FARM LINE RINGING CODE OUTSIDE BACK COVER

# Telephone Directory

— FOR —

## ANNANDALE

### South Haven

1973  
1941  
32



**FIRE**  
Call  
Operator

**POLICE**  
Call  
Operator

ISSUE 1941

## — Notice Farmers —

### Dead Animals Removed FREE

We Remove Dead Horses, Cows, Hogs, Calves and Sheep  
(With Hides On) Promptly

RELIABLE AND EFFICIENT SERVICE

### ANNANDALE DEAD ANIMAL SERVICE

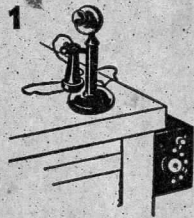
*Branch of Hoglund Bros.*

**Annandale Tel. 75**

Reverse Telephone Charges — We Pay Them

▼  
We are the originators of this Service in the Rural Districts

# TELEPHONE EQUIPMENT to meet your service needs

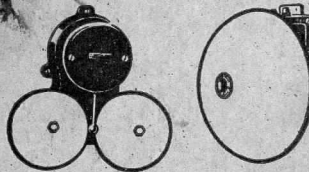


## SPECIAL TELEPHONE SERVICE for the HARD of HEARING

Adjustment of switch increases  
the volume of sound.

2

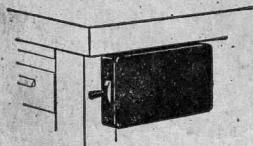
## LOUD RINGING TELEPHONE GONGS



For large or noisy places such  
as lumber yards, garages, etc.

3

## PRIVACY SWITCH FOR YOUR TELEPHONE



To provide privacy by disconnecting  
extension telephones or to  
silence extra bells.

4

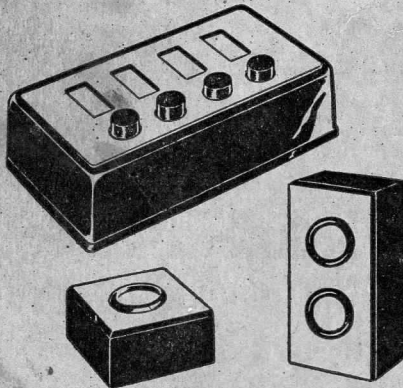
## TELEPHONE CONVENIENCE OUTLETS



Can be put in like electric outlets—  
plug in portable telephones when  
and where most convenient.

5

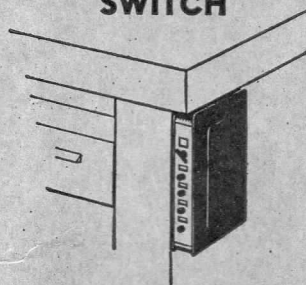
## TELEPHONE BUZZERS



For use in signalling some-  
one else to talk over  
another telephone.

6

## TELEPHONE CALL-HOLDING, PRIVACY and INTERCOMMUNICATING SWITCH



You can hold and cut off calls  
and intercommunicate on  
one telephone line.

We shall be glad to discuss any of these items with you. Just call the  
telephone office.

# TELEPHONE DIRECTORY

OF

## The Annandale Telephone Exchange Co.

W. C. KIEHN, Manager

Annandale, Minn.

Exchanges at Annandale and South Haven

## How to Use the Telephone

---

### LOCAL SERVICE

Always obtain the correct telephone number from the directory before you make a call.

If the person you wish to speak to is not listed in the directory, call "Information."

Always speak slowly and clearly when you call a telephone number so that you will not be misunderstood.

Speak directly in the telephone with your lips about an inch from the mouthpiece.

After you have passed your call, listen carefully while the operator repeats it. If she repeats it correctly, say "Right", if she repeats it incorrectly, say "No" and pass the call again.

Do not hang up the receiver until you are through with the connection. When you do you give the operator a signal to disconnect you.

When your telephone is not in use always keep the receiver on the hook; otherwise your line will be out of order.

Answer your calls promptly.

In answering a call, say for example, "Mr. Jones speaking" or "Smith & Co., Jones speaking." This method of answering identifies you and saves time.

To make a long distance call, ask the operator for "Long Distance."

### LONG DISTANCE SERVICE

When "Long Distance" answers, give her your telephone number followed by the details of the call.

After giving the details of your call, retain the receiver at your ear until "Long Distance" says, "The operator will call you." Then hang up the receiver and await the completion of the call.

A messenger will be sent to summon the person desired to the telephone, if necessary and feasible, provided you agree to pay the messenger charge.

Charges will be collected at the telephone called if you request this when placing your call, provided the person called agrees to pay the charges.

If the person called is out, word will be left for him to call when he returns, if you so request.

If you desire a report on a delayed long distance call ask "Long Distance."

To obtain the rate to any place, call "Long Distance."

Long distance rates are on a basis of conversations of specified lengths. When conversation extends beyond the specified period, extra charge will be made.

If you wish to be advised of the charges on a message at the close of a conversation, notify "Long Distance" when you pass your call.

# Rules and Regulations

## Governing Service Furnished by The Telephone Companies Shown in this Directory

Call Information for the Telephone Number or Address of  
the Nearest Federal Bureau of Investigation Office

The following are the Rules and Regulations governing Subscribers' telephone service furnished by the companies shown in this directory.

### Use of Equipment by Subscriber

All telephone equipment furnished to subscribers shall be used only by the subscriber or members of his family, his guests or persons residing with him as members of his household, or by his agent or employees when engaged in his business; and shall not be used in any manner in competition with the business conducted by the Company. The equipment shall not be removed from the subscriber's premises except by an authorized employee of the Company, and shall be surrendered to the Company upon the termination of the subscriber's contract.

### Connecting With Other Equipment and Appliances

The equipment furnished by the Telephone Company, shall not be connected with any other equipment and no instrument or appliance shall be connected to it. Telephone instruments have been designed to produce the best results and are necessarily sensitive and intricate. The various devices which are offered for sale, and which are supposed to improve transmission, eliminate noise, destroy germs, or afford other improvements, are not only unnecessary, but generally cause trouble. In order to protect its service the Telephone Company will remove all such appliances.

### Right of Access to Premises

At all reasonable times the Company, through its authorized employees, shall have the right of access to the premises of the subscriber to install, inspect or repair the lines or equipment, or to remove them upon termination of the subscriber's right of use.

### Allowances for Failure of Service

The Company does not guarantee uninterrupted working of its lines or equipment. For any complete failure of service, however, of more than twenty-four (24) hours duration, of which the Company is promptly notified in writing, a pro rata abatement of the contract charge will be made.

### Errors in Directories

The Telephone Company issues directories to assist it in furnishing prompt and convenient service, and it does not guarantee to its subscribers correct listings therein. Every precaution is taken to prevent errors and omissions, but they will occur, and the Company assumes no liability for damages caused to a subscriber by such errors or omissions in its directories. Claims for damages on account of interruption to service due to errors or omissions in directory listings will be limited to a pro rata abatement of the charge for service in accordance with the portion of the subscriber's service affected; and in no event shall such damages exceed in amount one-half the regular rental of the subscriber for the period of time from the issuance of the directory in which such mistake occurred to the date when there is published a new directory containing the proper listing of the subscriber's name.

### Change of Number

The Company reserves the right to change the subscriber's telephone number or designation at any time.

### Charges for Moves

The subscriber will be required to pay the company's customary charges for any change in the location of his telephone equipment made at his request.

### Advance Payments

All bills are due and payable in advance at the Office of the Company.

### Outgoing and Incoming Service Privileges

The tariffs and rate schedules of the Company govern and fix the outgoing service of a subscriber and in no manner guarantee to him the same incoming service. All incoming service of a subscriber depends upon and is limited by the right of the calling subscriber to such service.

### Default of Payment or Other Breach of Contract

All bills are due when rendered, and are payable at the Company's business office. Failure to receive a bill, however, will not exempt the subscriber from prompt payment as required by his contract. In the event of any default of payment, or other breach of the terms of its service contract, the Company reserves the right to at once discontinue the subscriber's service or disconnect and remove its telephone equipment.

# ANNANDALE EXCHANGE

W. C. KIEHN, MANAGER

No additional charge for South Haven Service.

## A

Advocate Printing Office.....	52
Ahsenmacher W J Park Resort.....	552-L-1
Albion French Lake Creamery.....	3-L-16
Anderson Mrs Anna res.....	174-R
Anderson Edwin farm.....	4-L-20
Anderson Mrs Hilma farm.....	51-L-7
Anderson J F farm.....	252-L-17
Anderson Julius farm.....	555-L-20
Andrews Gilbert Pool Hall.....	118
Andrews J E farm.....	35-L-23
Annandale Baking Co.....	191
Annandale Co-op Creamery Assn.....	3
ANNANDALE DEAD ANIMAL SERV.....	75
Annandale Hatchery.....	71
ANNANDALE STATE BANK.....	10
ANNANDALE TELEPHONE EXCH CO	
Mgrs. Office.....	175
Annandale Village Pump House.....	73
Annandale Village Rest Room.....	96
Aronson Arvid farm.....	15-L-10
Aronson Robert Lafayette Resort.....	515-L-1
Aronson Willard res.....	44-R

## B

Bachinski Felix Mac's Resort.....	52-L-14
<b>BAHR GILBERT</b> Garage and res.....	91
Baker E N Resort.....	25-L-6
Bakula Frank Resort.....	3-L-7
Baudoin Willard Trucking.....	112
Bauler J P Cottage.....	51-L-6
Bea's Beauty Salon.....	117-R
Beecher A H Tuelle Resort.....	55-L-6
Bendix Dr L H Office.....	58
Bendix Dr L H res.....	89
Benson Albert Well Repairing res.....	135
Bentley Louis res Trucking.....	45
Berg Mrs Peter farm.....	525-L-17
Bergaus Wm res.....	15
Betsinger H F res.....	63
Bierman Wm res.....	152-L-1
Bissonnette Walter H res.....	53-L-26

Bliss Caroline cottage.....	41-L-1
Blowers Fay Trucking.....	55-L-14
Blowers Glenn farm.....	525-L-26
Bluhm Wm farm.....	251-L-14
Bradley C F cottage.....	252-L-11
Bradley Mrs Emma res.....	15-L-11
Brandon Real Estate Office.....	20
Broberg and Broberg Grocery.....	19
Broberg Clard res.....	141
Brose Barber Shop.....	67
Brown Carl res.....	181
Brown James H farm.....	52-L-11
<b>BROWN &amp; SONS MFG CO</b> .....	84
Brown Oscar res.....	147
Bucker C A res.....	525-L-2
Buckman Clarence farm.....	53-L-21
Buhlman E H Cottage.....	4-L-2
Bullock Harold farm.....	552-L-13
Buranen Helmer Store.....	25-L-12

## C

Carlson Alfred Trucking.....	127
Carlson George farm.....	25-L-20
Carlson Leonard res.....	156
Carlson Rev. Paul E res.....	3-L-17
Cassellius Joseph Resort.....	52-L-13
Catholic Parsonage.....	18
Chamberlain Mrs Ida res.....	145
Christianson H res.....	163
Cities Service Oil Station.....	198
Cofield Inn.....	25-L-13
Cofield O L res.....	173
Cole W C farm.....	25-L-14
Cooper James farm.....	152-L-5
Cordell G W farm.....	155-L-11

## D

Dahlin Anton farm.....	551-L-15
Dahlin John farm.....	55-L-15
Danaher Tom F cottage.....	555-L-1
Danielson A H Cafe res.....	162

## Bahr's Garage

GENERAL REPAIRING  
TOW CAR SERVICE

Tele. 91

Gas — Oil — Accessories

Annandale



Furniture — Hardware — Funeral Directors

# E. H. DUNTON & SONS

ANNANDALE

MINNESOTA

## ANNANDALE EXCHANGE

Davidson H R farm.....	555-L-17
Davis Raymond farm.....	25-L-10
DeBord Wm farm.....	35-L-12
DeChaney J D res.....	172
DeChaney Joe farm.....	51-L-25
Dietzel John res.....	113
<b>DUNTON E H &amp; SONS Hardware</b> .....	<b>50</b>
Dunton Edwin res.....	121
Dunton E H res.....	103
Dunton Homer res.....	124
Dunton Dr R L Office.....	177
Dunton S H res.....	99
<b>D-X SERVICE STATION</b> .....	<b>140</b>
Dynan Mrs Julia farm.....	55-L-20

### E

Eaton Zeb cottage.....	74
Elfstrand Aaron farm.....	3-L-20
Erickson Frank Contractor.....	122
Erickson Wm Contracting.....	55-L-17
Estling Wm Store.....	25-L-2

### F

Fagerlund Arthur farm.....	552-L-18
Farmers Elevator Company.....	9
Fashant Jule farm.....	4-L-3
Fashant Russel res.....	116-R
Figeley A A cottage.....	525-L-1
Figge Dan res.....	25-L-23
Figge John farm.....	555-L-7
Fisher Fred farm.....	151-L-14
Francis Ray K farm.....	3-L-5

### G

<b>GAMBLE STORE AGENCY J W Glazier</b> ..	<b>98</b>
Geardink Chas Mears Resort.....	25-L-11
Glazier J W res.....	193

Glendale Club Member Home.....	53-L-13
Goodrich Dr H R Resort.....	2-L-13
Gordon Earl farm.....	555-L-21
Griffith Mrs J C Cottage.....	5553-L-11
Grinols E E res.....	104-R
Gruss A C Jr res.....	143
Gunderson Carl farm.....	515-L-19
Gunderson Edwin farm.....	515-L-15
Gunderson Frank farm.....	1551-L-15
Gunderson Mrs J E farm.....	51-L-15
Gunnary Emil B farm.....	155-L-19
Guptil Richard Cottage.....	52-L-6

### H

Haggerty Mrs John res.....	87
Hall Mrs Dorothea Resort.....	35-L-20
Hart David res.....	138
Hart Fred res.....	96
Hart Russel Cafe.....	34
Hart Russel res.....	134
Hawkinson Fred Produce.....	165
Hawkinson C W res.....	142
Hawkinson Walter Implement Shop.....	33
Heaton Mrs Cora res.....	144
Heaton Gene cottage.....	55-L-1
Heberling Mike farm.....	55-L-2
Heck Kenneth farm.....	3-L-3
<b>HERZBERG J A Meat Shop</b> .....	<b>48</b>
Herzberg J A res.....	109
Hill Blanche Bungalow Beach.....	51-L-10
Hill's Grocery.....	27
Hill H K res.....	110
Hoffman Myrtle farm.....	515-L-10
Hoikka Jacob farm.....	1551-L-16
Holmes M J res.....	25-L-1
Hotel Annandale.....	60
Houchins George farm.....	55-L-24
Howard Reginald farm.....	55-L-13
Howe Spencer Cottage.....	35-L-14
Hunter's Corner Store.....	4-L-6



# Gamble Store Agency

JAS. W. GLAZIER

AUTO ACCESSORIES — TIRES — WE CHARGE BATTERIES  
HARDWARE AND PAINTS

Telephone 98

Annandale



# W. S. Ives Lumber Company

Headquarters for  
BUILDING MATERIAL OF ALL KINDS  
Annandale



## ANNANDALE EXCHANGE

### I

Immel W T Barber and Beauty Shop.....	126
<b>IVES W S LUMBER CO.....</b>	<b>65</b>
Ives Ross M res.....	64

### J

Jardine A B res.....	78
Johnson Bros farm.....	151-L-19
Johnson Chas farm.....	55-L-21
Johnson Raymond farm.....	251-L-10
Johnson Joe farm.....	552-L-17
Jude R H & Sons Gen Mdse.....	94
Jude R H res.....	180

### K

Kean M J farm.....	51-L-22
Kelly Earl Resort.....	168
Kelly Earl res.....	183
Kelly Joe farm.....	515-L-16
Kelly Mrs R F farm.....	152-L-22
Kiehn John farm.....	4-L-10
Kiehn Wm res.....	251-L-20
Kingstedt Mrs E res.....	100
Kline Mrs Fred Sr res.....	3-L-24
Kline Henry farm.....	35-L-1
Knickerbocker Elwyn res.....	4-L-5
Knickerbocker Henry farm.....	25-L-5
Knickerbocker W C farm Resort.....	525-L-5
Korsten Mrs John farm.....	53-L-14
Kreig E G Cottage.....	515-L-2
Kuhnley Louis farm.....	5155-L-11
Kurz Chas farm.....	25-L-7
Kurz Mrs Cora F res.....	4
Kurz Mrs George res.....	179
Kurz Oscar res.....	187

### L

Lacina Edward farm.....	52-L-15
Ladwig Frank farm.....	1551-L-9

Laitanen Adolph farm.....	55-L-16
Lampi Bros farm.....	251-L-16
Lampi Martin Auctioneer.....	551-L-16
Lang Edward res.....	30
Langdon W C res.....	178
Lano Harry res.....	22
Lantto Emil farm.....	1551-L-22
Lantto George Store West Albion.....	51-L-16
Lantto Store French Lake.....	55-L-22
Larson John res.....	28
Larson LeRoy Early Dawn farm.....	55-L-3
Larson Lewis res.....	158
Lee J F farm.....	3-L-13
Leinonen John farm.....	25-L-16
Leinonen Wm C farm.....	25-L-22
Levy Mrs Lee Cottage.....	551-L-1
Lofstrom A H.res.....	17
Logeais Adlore farm.....	52-L-3
Logeais Canute Station.....	23-R
<b>LUNDEEN BROS Garage.....</b>	<b>157</b>
Lundeen Carl res.....	21
Lundeen Edward farm.....	5155-L-17
Lundeen Joe res.....	107
Lundeen Reuben farm.....	35-L-17
Lundeen Ted res.....	77
Lundeen Walter res.....	81
Lundman A Q Jewelry Store.....	70-R
Lundman A Q res.....	70-W
Lundsten Edwin res.....	93
Lusti Mrs Aug farm.....	53-L-22
Lydiard L A res.....	178

### M

Mabus C J farm.....	15-L-22
Maple Hill Resort Love Geo.....	551-L-5
Mares Ben farm.....	515-L-20
Marohn Produce.....	111
Marohn Robert res.....	29
Marohn's Standard Service.....	106
Martinson Martin farm.....	52-L-12
Martinson Paul Augusta Beach.....	515-L-26

**"It PAYS because it STAYS"**  
**TELEPHONE DIRECTORY ADVERTISING**

# Annandale State Bank

Member Federal Deposit Insurance Corporation

GENERAL BANKING

All Forms of Insurance

Telephone 10

## ANNANDALE EXCHANGE

Matson C A Pebble Beach Resort.....	555-L-10
Maynard's Liquor Store and res.....	194
McLeod J W res.....	159
Mears Resort.....	25-L-11
Methodist Parsonage.....	78
Medding Herman Resort.....	53-L-5
Michaud W B cottage.....	5552-L-5
Miller Addison Summer Home.....	15-L-27
Miller Jack Jr "Jack's Place".....	5555-L-4
Mpls St Paul & Ste M Ry Co depot.....	53
Mogenson Store.....	40-R
Mogenson Mrs Alice E res.....	40-W
Moran James farm.....	5555-L-14
Muehring Wm farm.....	4-L-14
Murray L Cottage.....	3-L-2
McDonald Colin res.....	148
McDonald Mrs Laura A res.....	88

### N

Nelson Albert E farm.....	151-L-18
Nelson Harold res.....	190
Nelson Oliver res.....	16
Niles Wm farm.....	515-L-4
Nivala Elmer farm.....	152-L-19
Nivala Fred farm.....	3-L-22
Nivala Gust farm.....	53-L-19
Nordberg Mrs Flora farm.....	41-L-10
Norris Dr Geo H Office.....	20
Norris Dr Geo H res.....	31

### O

Olean Elmer farm.....	53-L-17
Oletzke John farm.....	555-L-15
O'Loughlin Francis farm.....	52-L-18
O'Loughlin T. P farm.....	551-L-22
Olson Albert F farm.....	4-L-21
Olson E W farm.....	555-L-25
Olson Fred farm.....	551-L-13

Olson Big Ole cottage.....	51-L-14
Olson Ray Cottage.....	155-L-1
Osborn McMillan Elevator Company.....	97
Oslund Nels farm.....	251-L-15
Osterby John farm.....	53-L-4

### P

Partridge Cecil farm.....	152-L-10
Partridge Walter farm.....	3-L-10
Perske Theodore farm.....	3-L-14
Peterson Earl res.....	182
Pisak Leona farm.....	515-L-9
Planer Mrs W J Silver Maple Stock Farm.....	15-L-4
Ponsford Archie farm.....	551-L-14
Ponsford C L res.....	120
Post Office.....	95
Powers John res.....	66
Prahl E H Drug Store.....	26
Prahl E H res.....	131
Producers Co-Op Asso West Albion.....	4-L-16
Producers Co-Op Asso French Lake.....	4-L-18

### R

Rainbow Cafe A D Bentley.....	90
Raisanen Mrs Lempi farm.....	515-L-22
Ransom Arthur farm.....	151-L-4
Ransom Henry Springdale Farm.....	55-L-4
Ransom Lyman farm.....	55-L-10
Richards Dr W B Cottage.....	251-L-2
Ridgway Dr A M Office.....	58
Ridgway Dr A M res.....	85
Ridgway Dr A M cottage.....	552-L-14
Riep Emil res.....	169
Riep Wm farm.....	251-L-13
Rochel E J Plumbing and Heating.....	35-L-7
Rossiter Bert H Sylvia Cedars Resort.....	5555-L-10
Rousseau Emil res.....	54
Rousseau Renel res.....	49
Rudolph Cecil farm.....	151-L-13

## Brown & Son Manufacturing Co.

ASK YOUR DEALER FOR VELVET ICE CREAM  
CHEESE

Telephone 84

Annandale



# DO YOU WASTE STEPS?—

Additional telephones conveniently located add comfort to a home . . . save hundreds of steps daily.

**An Extension Telephone Costs Only a Few Cents a Day**

## ANNANDALE EXCHANGE

Rundquist Fred farm..... 52-L-17  
 Runquist Dr N A res..... 115  
 Ryan J P Cottage..... 15-L-6

### S

Saksa John farm..... 52-L-16  
 Sand Rev Alex res..... 551-L-17  
 Sarempaa Henry farm..... 155-L-17  
 Sather Carl res..... 11  
 Sather Ralph res..... 61  
 Satterlee N T res..... 161  
 Sawade Fritz farm..... 555-L-4  
 Sawyer P L res..... 154  
 Scheyer Mrs Adeline farm..... 551-L-4  
 Schierts Geo G Law Office and res..... 130  
 Schmitz W J farm..... 4-L-25  
 Schnackenberg's Grocery..... 46  
 Schneider Mrs Catherine res..... 13  
 School Dist No 71 School House..... 129  
 This Station can not be called during the hours  
 from 9:00 to 10:30, 10:45 to 12:00, 1:00 to  
 2:30 and 2:45 to 4:00.  
 Schultz Albert farm..... 104-W  
 Shelmire Maple Lodge Resort..... 53-L-11  
 Peddycoart Leo  
 Shields John Feed Store..... 76  
 Sjolín Algot farm..... 151-L-1  
 Sjolín Arthur Cottage..... 151-L-6  
 Skelly Service Station..... 5  
 Smith Mrs Geo H res..... 86  
 Smith George L res..... 105  
 Smith Dr N C Dentist Office..... 6  
 Smith Dr N C res..... 170  
 Solem Farm..... 515-L-12  
 Solem Ossie Camp Owanka..... 152-L-12  
 Soo Line Dépot..... 53  
 Sparks Mrs S G res..... 38

Spaude Fred and Elmer farm..... 55-L-9  
 Sport's Bar..... 49  
 Stone Edna and Aleeta Cottage..... 35-L-11  
 Strecker Mrs Chris farm..... 1551-L-13  
 Sykes E E res..... 57

### T

Terry Mrs Grace res..... 152-L-11  
 Thayer B H & Son Store..... 25  
 Thayer B H res..... 72  
 Thompson Fred Bass Lake Stock Farm..... 52-L-1  
 Tripp H E res..... 119  
 Tygeson Mrs Mae B res..... 62

### V

Van Dyk Alfred farm..... 555-L-2  
 Vogan Mrs Harry E Springdale Resort..... 25-L-26

### W

Wade C C and Fred J..... 155-L-2  
 Warner Mrs Henry Summer Resort..... 25-L-9  
 Weigand Gerald farm..... 155-L-5  
 Weigand Louis farm..... 35-L-9  
 Weigand W W farm..... 52-L-5  
 Welch Mary V farm..... 15-L-14  
 Welch M J res..... 164  
 Wells Melvin farm..... 4-L-11  
 Wikelius Clifford res..... 102  
 Williams L R res..... 146  
 Wittenberg Albert res..... 132

**The Low Cost of Toll Telephone  
 Service Gives Opportunity of Frequent  
 Voice-to-Voice Visits.**

# South Haven Exchange

W. C. KIEHN, MANAGER — Annandale, Minn.

24 Hour Service. No Charge for Annandale Service

## DIAL SERVICE — Special Information

For Long Distance.....Dial 0	To Report Trouble.....Dial 0
For Information.....Dial 0	To Reach Annandale.....Dial 0

### A

Alberg Ed farm.....362  
Albers Henry farm.....8336

### B

Bartlett Mrs Hannah.....338  
Beck Rev J H res.....8338  
Blanness Rev J O farm.....422  
Boggs Jim res.....488  
Boobar Miss Amy res.....251  
Bremer Mrs Wm E farm.....353

### C

Cole Mark res.....328  
Corsan Ralph res.....8487  
Cozy Comfort Camp R A Johnson Prop....486

### D

Damman John farm.....323  
Damman Otto farm.....354  
Damman Tony farm.....327  
Davis Standard Service.....551  
Davis Walter res.....552  
Dorman Mrs Anna res.....434

### E

Erickson Mrs Aug farm.....423  
Evangelical Parsonage.....461

### F

Fair Haven Creamery.....336  
Fair Haven Garage.....337  
Farmers Exchange Inc.....271  
Flannery Geo P res.....483  
Flyare Cash Store.....231  
Flygre Robert Cottage.....8407

### G

Garrison John farm.....8408  
Gehrke Henry farm.....8347

### H

Happy Hour Cafe C B VanVliet.....471  
Hedlund Cafe.....311  
Hendricks O C res.....521  
Hoffman Paul farm.....357  
Holes Store Fair Haven.....391

### J

Jeppesen R P res.....262  
Jeppesen Store.....261  
Jergenson and Lee farm.....8486

### K

Kersten Ernest farm.....402  
Kiehn Emil farm.....403  
Kline Mrs Esther res.....382  
Knute Art Station.....572

### L

Lien John Store Fair Haven.....8333  
Lies Joe Meat Market.....411  
Lueders Herman farm.....438

### M

Markwardt Louis farm.....344  
Markwardt Wm farm.....343  
Marquardt C A res Trucking.....491  
Matthees John farm.....322  
McCann Lee farm.....361  
McFarland Dr A H cottage.....8484  
McPheeters Dr Cottage.....8482  
Meyers Mrs Wm.....433  
Miller Fred res Well Repairing.....406  
Miller Fred R res.....541  
Miller George Trucking.....356  
Miller Otto farm.....351  
Miller Walter farm.....8404  
Minneapolis St Paul & St Ste Marie  
Ry Co.....371

## We Market Our Farm Produce by Telephone

Are you using your telephone as much as you could? For example one farmer writes:

“We keep in touch with markets by  
Telephone and Sell on an up market.”

## SOUTH HAVEN EXCHANGE

N	
Nauman Rev Albert H res.....	461
Nelson Harry farm.....	8403
Nelson W A res.....	581
O	
Olson Carl farm.....	426
Olson F Sylvia Cottages.....	408
Olson Henry res.....	8424
Olson Einard farm.....	8427
P	
Palzin Herbert C farm.....	436
Peterson L C res.....	561
Peterson Robert farm.....	8334
Pramann Henry A farm.....	393
R	
Ristau Adolph farm.....	8393
Rucks Henry farm.....	392
S	
Schlink Adolph res.....	511
Schultz R B Store Fair Haven.....	324
Schwanke Ed Store Fair Haven.....	352
Senske E A farm.....	397
Shady Nook Improvement Assn.....	8483
Simberg Fred farm.....	8409
South Haven Oil Co.....	501
South Haven Sundry & Novelty Store.....	381
Steenlage H H res.....	8344
Strecker Wm farm.....	364
Stuve Oscar Trucking.....	333
Soo Line.....	371
T	
Tessman Junie res.....	366
Truenow Henry farm.....	347
Truenow Wm farm.....	8396
W	
Wadman Emil farm.....	8426
Wadman Ray res.....	424
Weis Geo farm.....	8402
Wittenberg F E farm.....	404
Witter Fred S farm.....	8406
Wolff Walter Garage.....	441

## How to Use the Dial Telephone

1. Obtain the telephone number of the wanted subscriber from the directory.
2. Lift the receiver.
3. Listen — If no tone is heard the line is clear and the exchange is ready to accept the dialled digits.

If the "All Links Busy Tone", a rapid buzz-buzz-buzz, is heard, the exchange is busy; replace the receiver on the hook and try again in a few minutes.

4. Dial the complete number as follows:

Place your finger in the hole over the first digit and turn the dial clock-wise until your finger hits the stop. Withdraw your finger and allow the dial to return to normal. Repeat this operation for each other digit in order. If your finger slips, or you realize a mistake has been made, stop dialling and replace the receiver. After a few seconds, remove it and dial the complete number over again.

### Ringing and Busy Signals

After you have finished dialling you should hear in the receiver either the **ringing signal** (an intermittent buzzing sound) or the **busy signal** (a rapid buzz-buzz-buzz).

If the ringing signal is heard it indicates that the called party is being rung. Allow a reasonable length of time for someone at the called station to answer. If you receive no answer hang up and call later.

If you hear the busy signal it means that the called phone is busy. Hang up and call later.

If you hear neither of these signals within a few seconds, hang up the receiver for a few moments and then lift it and dial the complete number again.

If several attempts fail, dial 0 and explain the circumstances to the operator.

### When Through Talking

Hang up your receiver so that your line will be disconnected and will be ready to make or receive other calls. If you wish to make several calls in succession hang up your receiver for a few seconds after each call.

### Party Lines and Extension Telephones

Efficient party line service depends largely upon the consideration and courtesy which each subscriber gives to the other parties on his line. Endeavor to limit your calls to 5 minute's duration.

When dialling on a party line, or any line with an extension telephone, it is necessary to consider the possibility that someone else may be using the line.

If you hear a conversation when lifting the receiver, the line is being used, replace the receiver and try later.

If you hear "Dialling Clicks" when lifting the receiver it means that someone else on the line is dialling a number. The lifting of your receiver has interfered with the dialling and you should inform him of it as soon as he has finished. Then hang up your receiver and permit him to dial again.

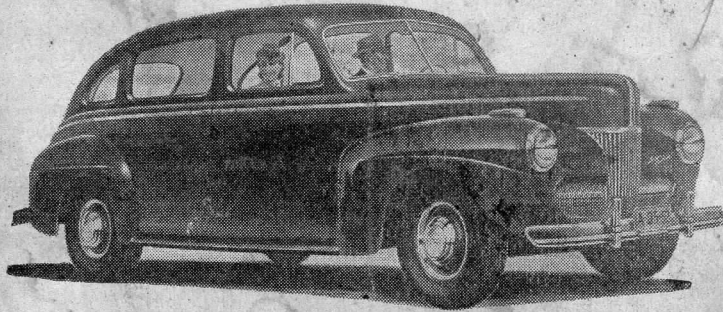
If you are dialling and hear another party lift up his receiver before you have heard the ringing signal, inform him that the line is in use and after he has replaced his receiver replace your own for a few moments, then remove it and dial the number again. If the other party lifts his receiver after you have heard the ringing signal it will not be necessary to redial the number. Merely inform him that the line is in use.

### Dialling Another Station on a Party Line

Calls to stations on the same line are made by dialling the regular directory number of the called station. The Busy Tone will be heard when the called line is reached; this is the signal to replace the receiver (after having dialled **all the digits of the wanted number**) to allow sufficient time for the called station to be rung once or twice before again removing the receiver to converse. Your bell will also ring the code which you dialled.

### Answer Your Telephone Promptly

Courtesy to the calling party requires that you answer your telephone promptly. Considerable time will be saved if you answer by giving your name or telephone number.



THE NEW FORD V-8

"After the Sale It's the Service That Counts"



**Lundeen Brothers, Inc.**

**Phone 157**

**Annandale, Minn.**



**D-X STATION**

Harold Jones

**ONE STOP STATION**

GREASING • WASHING

Sales — Batteries and Tires — Service

Tele. 140  
Annandale

Cafe and Lunch Room  
A Good Place to Stop

Tele. 140  
Annandale

**New Key to Calls**

- |                       |                      |
|-----------------------|----------------------|
| 1 — One short ring    | 4 — Four short rings |
| 2 — Two short rings   | 5 — Long ring        |
| 3 — Three short rings |                      |

All farm lines are F for Farm Line and in town No. 42-51.  
General call, six short rings, not free to anyone.

Subscriber, please destroy your old directory.